



Plast Commerce - 93

PRODUCT CATALOGUE

ABOUT US

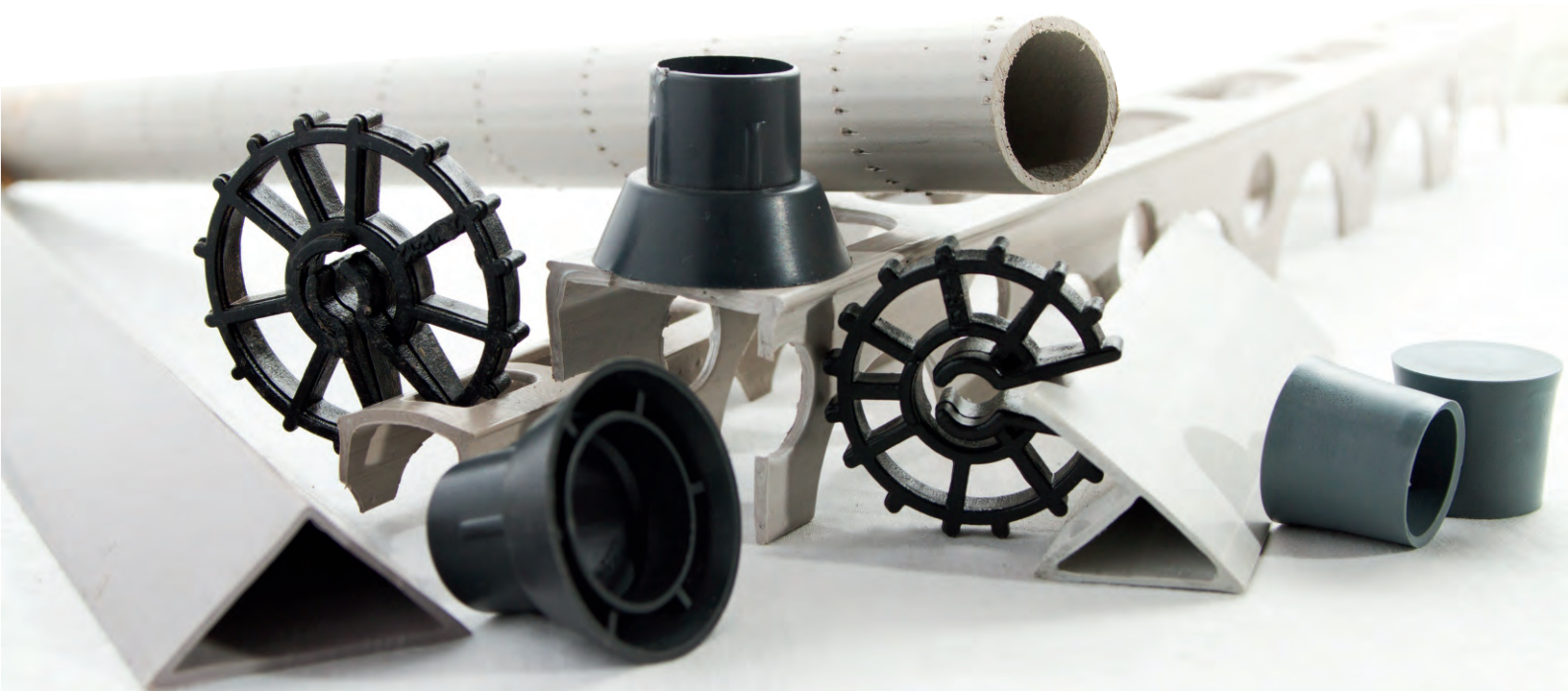
Plast Commerce - 93 is a limited liability company, established in 1992. Over 20 years, we are one of the leading companies - manufacturers of PVC granulates on the Bulgarian market, as well as of different final PVC products - spacers for reinforcement structures, waterstops, PVC wall panels, hoses, tile trims, extruded profiles as per client's requirements.

The main production centre of the Company is situated in the town of Berkovitsa. We also have a production facility in the town of Ihtiman. Our headquarters, as well as additional storage facilities, are located in the city of Sofia.

Some of the biggest construction companies on Bulgarian market are our customers, as well as a number of authorized distribution companies in the entire country.

The Company's motto is:

CLIENT IS ALWAYS RIGHT



PVC GRANULATES

We produce high- quality PVC compounds - rigid and soft - for extrusion and injection moulding. They are characterized with excellent thermal stability, good and homogeneous melting and they make the final products have a very good appearance. Different types of granulates have application in production of goods for construction and automotive industry, shoe industry, medicine and pharmacy, cable industry, packaging and many others.

The granulates are produced in a wide range of colours and firmness, in order to meet the clients' various needs.



• Rigid PVC granulates - unplasticized

To be used for production of pipes, joinery works, wall coverings, different technical profiles, cable channels, rolling shutters, etc.

•Soft PVC granulates - plasticized

To be used for cables, sealings, hoses, flexible tubes, etc. Special PVC granulates (oil-resistant, acid-resistant, electrostatic, etc.) can be produced upon request.

Linear spacers for reinforcement structures



They provide concrete cover on the reinforcement during bottom layer of reinforcement. There is an excellent sealing of the concrete provided due to the numerous openings, preventing from cracking occurrence. The linear spacers provide easiness in serial laying in big areas.

Manufacture code	Concrete cover (mm)	Length (mm)	Packing (qty.)	
			Stack (m)	Pallet (m)
LF1015	15	2000	100	6400
LF1020	20	2000	100	4900
LF1025	25	2000	100	3600
LF1030	30	2000	100	3000
LF1035	35	2000	100	2500
LF1040	40	2000	100	2000
LF1050	50	2000	60	1800

Wheel spacers for reinforcement structures

The most commonly used plastic spacers, used for columns and vertical walls. They have a very good coherence with concrete and minimum contact with the formwork. Steady fixing to reinforcement steel with different diameters throughout binding pieces.



Manufacture code	Concrete cover (mm)	For steel (mm)	Packing (qty.)
TF2015/8-12	15	8/12	1000
TF2020/8-12	20	8/12	1000
TF2025/4-12	25	4/12	500
TF2025/4-16	25	4/16	500
TF2030/4-12	30	4/12	500
TF2030/6-16	30	6/16	500
TF2035/4-12	35	4/12	200
TF2035/6-16	35	6/16	125
TF2040/5-16	40	5/16	125
TF2050/5-16	50	5/16	100

Tube spacer

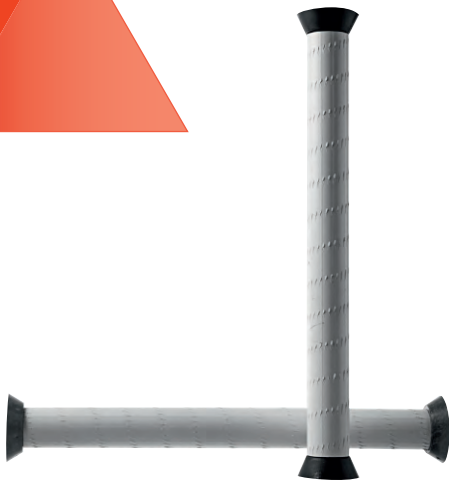
The formwork spacer tubes are used to protect the studs from the concrete and for fixing the formwork panels. The rough surface provides excellent coherence with concrete. The so produced 2- metre- tubes can easily be in- situ cut to the desired length.



Manufacture code	Diameter (mm)	Length (mm)	Packing (qty.)	
			Stack (m)	Pallet (m)
TR3022	∅ 22	2000	50	3500

Formwork spacer tubes with cones

Those are spacer tubes with cones on both ends. They are easier and more comfortable to work with with and they also save time for cutting the tube to the necessary length. They are supplied with length from 15 cm to 45 cm.



Manufacture code	Diameter (mm)	Thickness of the wall (mm)	Packing (qty.)
TRK3020	Ø 22	200	150
TRK3025	Ø 22	250	100
TRK3030	Ø 22	300	100
TRK3035	Ø 22	350	100

Supporting cone

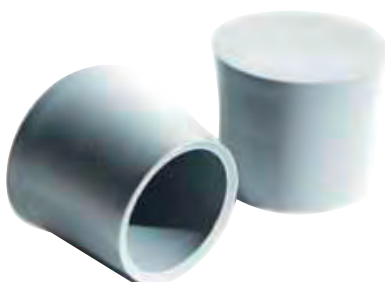
A plastic detail, which is to be fixed to the ends of the formwork tube, preventing from concrete leak between the stud and the tube. After concrete formwork dismantling, the cone can be easily removed and the remaining opening can be filled in with other fixing material.



Manufacture code	For inner diameter of the pipe (mm)	Aperture Diameter (mm)	Recess Depth (mm)	Packing (qty.)
K1222	Ø 22	Ø 18	12	500/1000

Formwork plastic plug

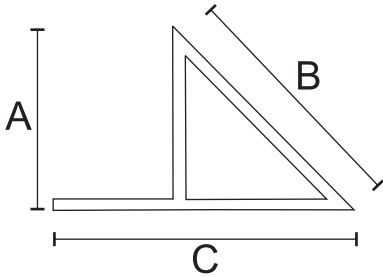
Plastic plug for sealing of the openings of the spacer formwork tube, after dismantling of the formwork panels.



Manufacture code	Diameter of the plug (mm)	Height of the plug H (mm)	Packing (qty.)
TK2222	Ø 22	22	1000

Chamfer with nail strip

Triangular profiles for forming of bevel angles of beams and columns.
To be fixed to the formwork before concrete foundation.
Suitable for multiple use.

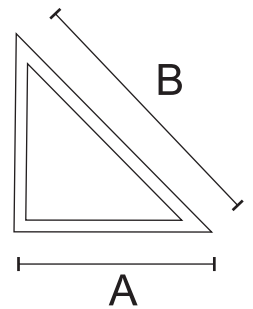


Manufacture code	Section dimensions			Length (mm)	Stack (m)
	A (mm)	B (mm)	C (mm)		
TPL5010	10	14	20	2500	100
TPL5015	15	21	30	2500	100
TPL5020	20	28	40	2500	100
TPL5025	25	35	50	2500	100



Chamfer without nail strip

Triangular profiles for forming of bevel angles of beams and columns. Suitable for multiple use.



Manufacture code	Section dimensions		Length (mm)	Stack (m)
	A (mm)	B (mm)		
TP4015	15	21	2500	100
TP4020	20	28	2500	100
TP4025	25	35	2500	100
TP4030	30	42	2500	100

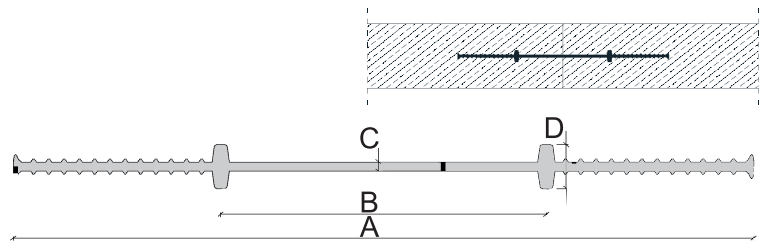
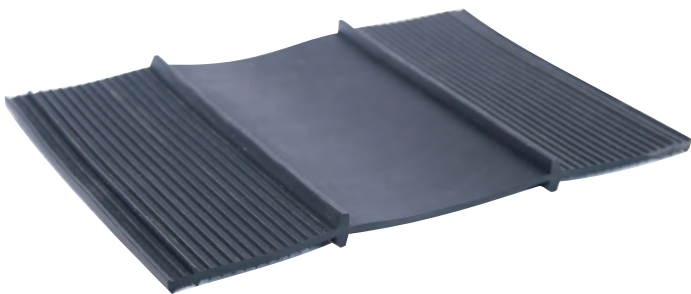
WATERSTOPS

PVC waterstops prevent from water leak through the zone of deformation and working joints of the concrete structures.

They have their widest application in: treatment plants, reservoirs, channels, dams, swimming- pools, tunnels, foundations or other type of concrete structures, where the water leakage must be under control or not allowed.

Internal construction joint waterstop - type A

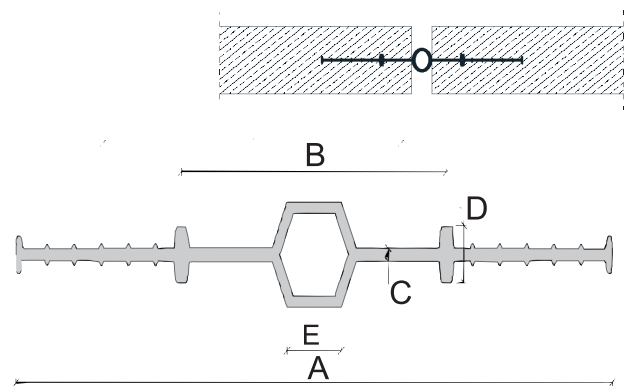
To be used for internal application, for construction joints. To be easily fixed to the reinforcement throughout brackets, gripping to the end fixing legs of the waterstop.



Manufacture code	Section dimensions				Rolls PACKING (m)
	A (mm)	B (mm)	C (mm)	D (mm)	
A 200	200	90	3.5	15	25
A240	240	90	3.5	15	25

Internal expansion joint waterstop - type D

For internal use, for compensating the deformations of expansion joints. Fixed in the center of the concrete element, it provides hydrostatic pressure resistance on both sides. It can be easily fixed to the reinforcement throughout special fixing brackets.

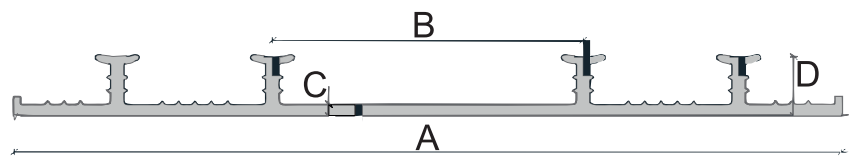
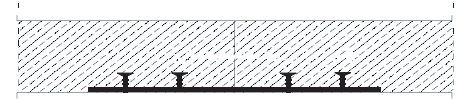
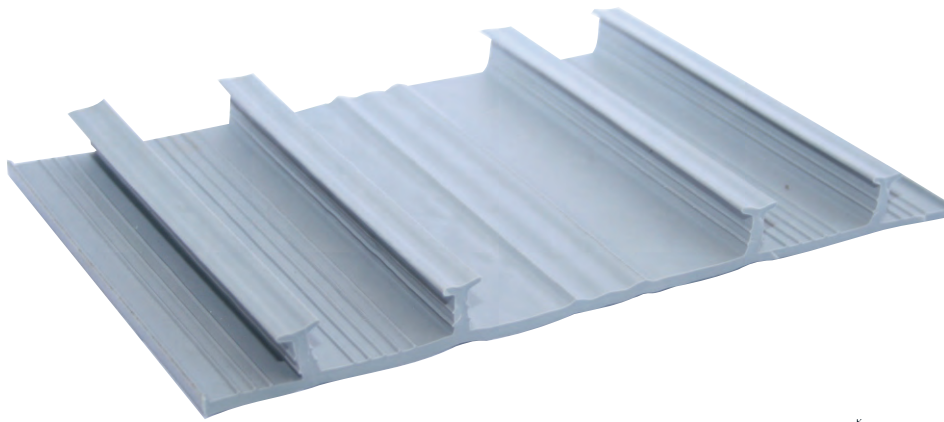


Manufacture code	Section dimensions					Rolls PACKING (m)
	A (mm)	B (mm)	C (mm)	D (mm)	E (mm)	
D 200	200	80	3.5	15	20	25
D 240	240	80	4	15	20	25

WATERSTOPS

External construction joint waterstop - type AE

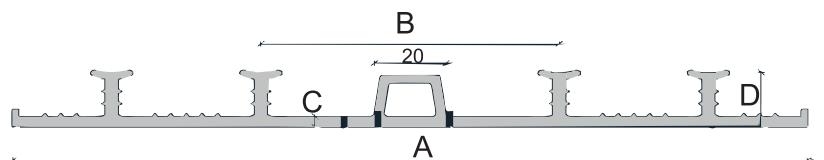
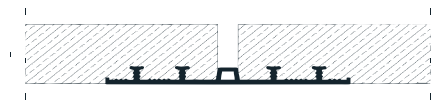
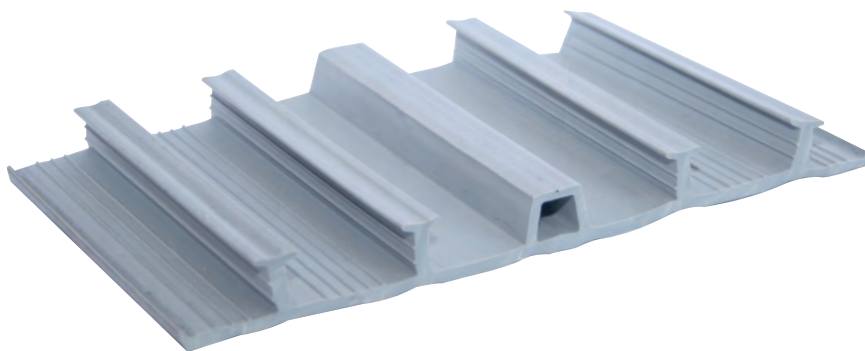
It is to be laid out externally, for insulation of construction joints. It can be fixed with nails to the formwork during wall moulding or directly to the base concrete during the foundation of the slabs.



Manufacture code	Section dimensions				Rolls PACKING (m)
	A (mm)	B (mm)	C (mm)	D (mm)	
A 240	240	90	4	20	20

External expansion joint waterstop - type DE

They are used to waterproof expansion joints. It is to be fixed directly to the formwork or to the concrete base.

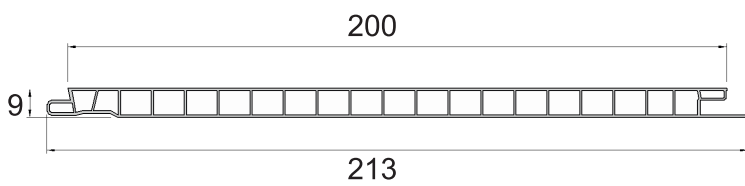


Manufacture code	Section dimensions				Rolls PACKING (m)
	A (mm)	B (mm)	C (mm)	D (mm)	
DE 240	240	90	4	20	20

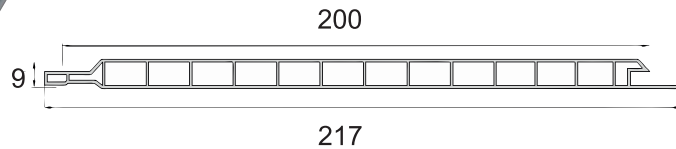
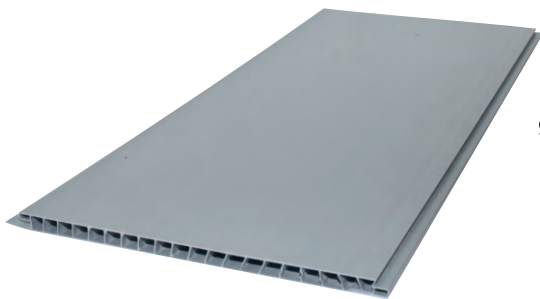
PVC WALL PANELS

Our PVC panels are of multi- use - they are appropriate for walls and ceilings of bathrooms, kitchens, passage ways, living- rooms, balconies, offices, shops, gas stations, halls, storage premises, factory units, service- stations, car wash units, garages, basements, mobile houses, etc. The standard length of the PVC panel is 2.60 m. Other desired dimension can be produced on request. .

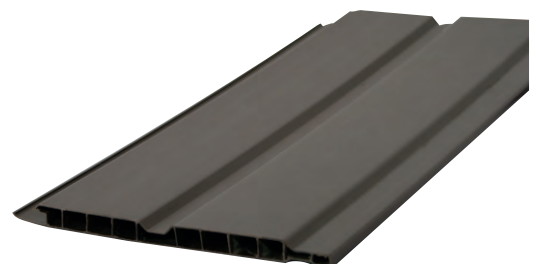
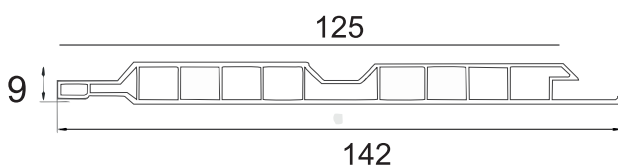
•PVC Wall Panel - 200 mm



•PVC Wall Panel - 200 mm with joint

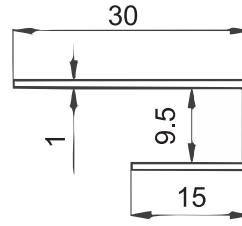
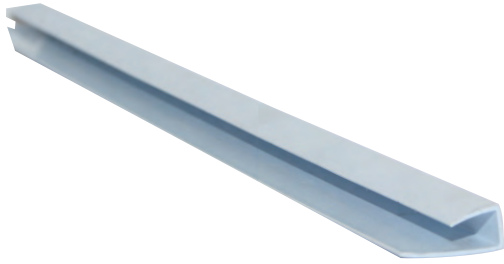


•PVC Wall Panel - 125 mm with joint



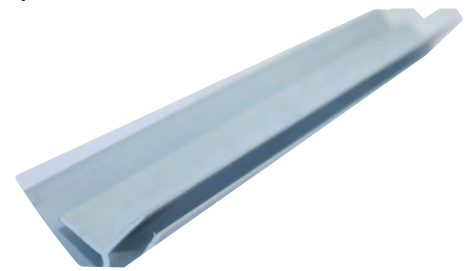
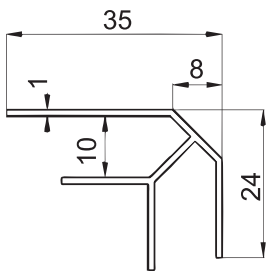
•Ending profile

To be mounted in the end of the panels.



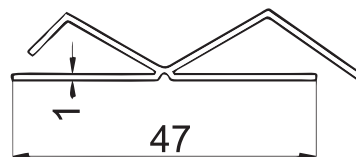
•Universal corner (internal/ external)

To be used both for internal and external angles.
To be mounted before the panels.



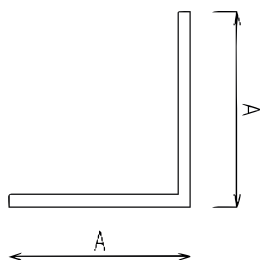
•Joint profile

To be used for connection in case of insufficient length of PVC panels or for connection of horizontal flakes with vertical ones. Can be used both for acute or blunt angles.



•Corner profile

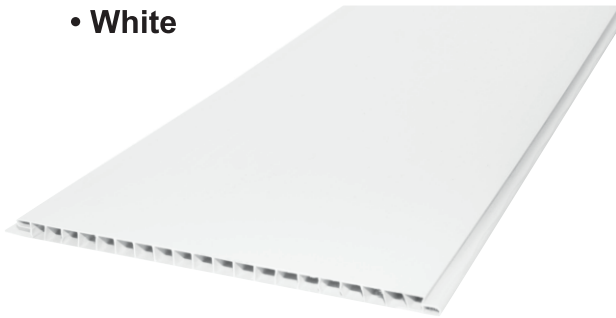
To be applied for internal and external angles. A= 15, 17 or 20 cm



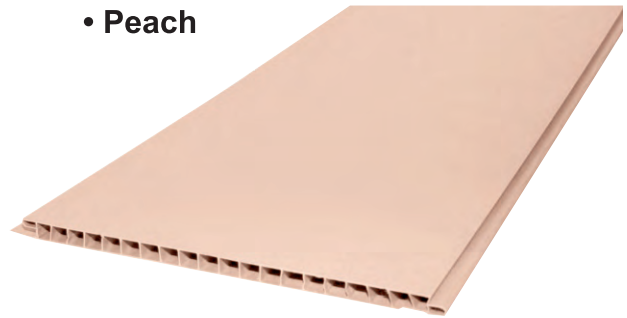
PVC WALL PANELS

Colours:

• White



• Peach



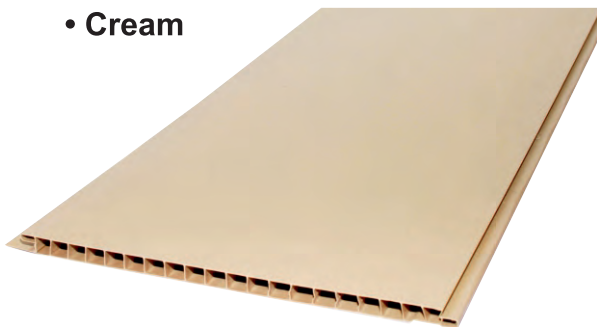
• Light grey



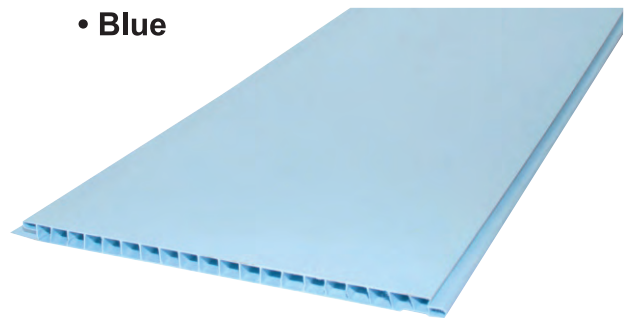
• Chocolate



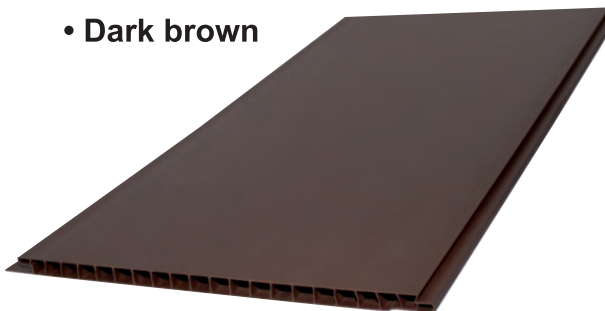
• Cream



• Blue



• Dark brown



• Dark grey



• Other colours can be produced on request.

PVC PROFILES ON REQUEST


We produce specific extruded PVC profiles in accordance with client's request. The well - established agreement between us and the client is the base of the production of the new product. Having over 20 years experience in extruding of rigid and soft PVC profiles, we are able to produce profiles which can meet your requirements.



PVC HOSES

We produce different types of PVC hoses in different colours and sizes (with inner diameter from 2 mm to 36 mm and outer diameter from 3 mm to 40 mm).





The present brochure is a result of the successful implementation of the project “Improvement of production processes in Plast Commerce - 93 for more sustainable behaviour”. The project has been put into realization thanks to the financial assistance of the Norwegian Government through the Norwegian Financial Mechanism 2009- 2014 within the frame of Programme Area BG10 - "Green Industry Innovations".

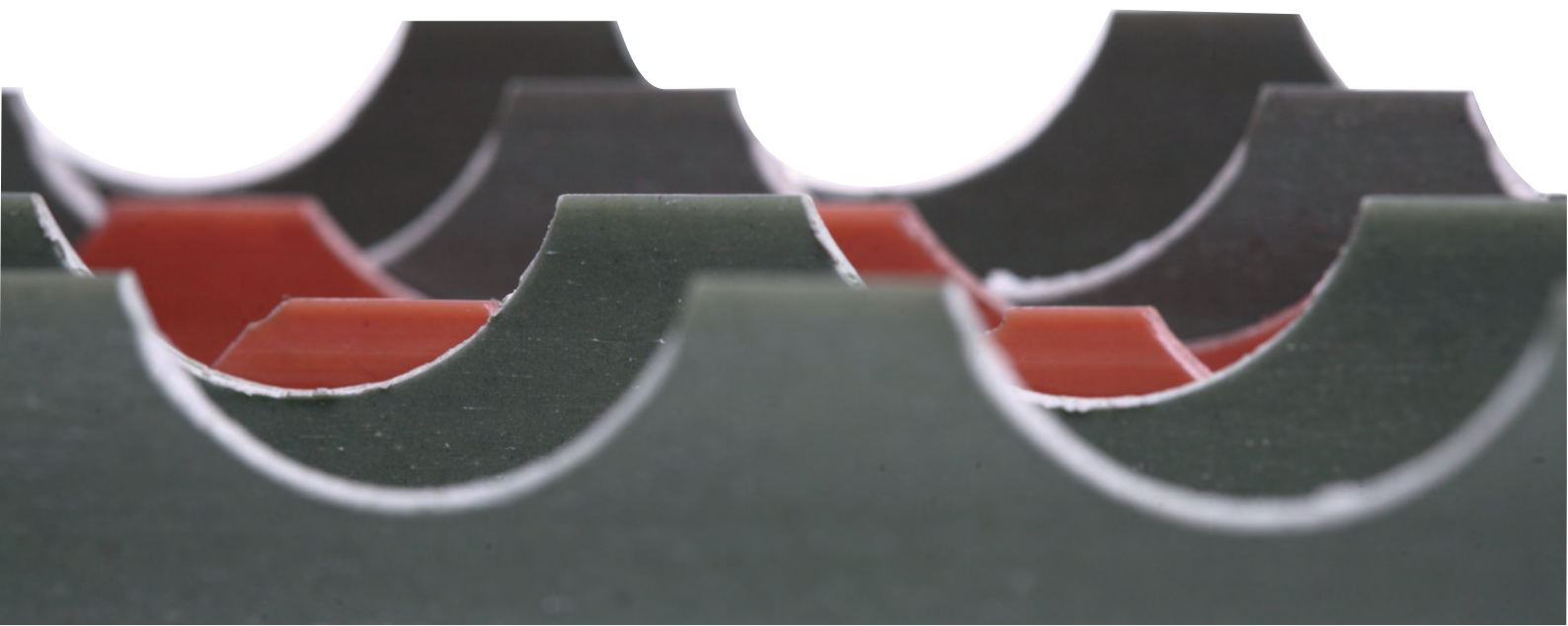
With this project the Company has set itself one very important task - to prove that a not very "green" business, as the PVC production and manufacturing is, can be energy sufficient and can be managed with a thought for environment and future generations. The main goal of the project was the improvement of the programme for sustainable development of Plast Commerce - 93 Ltd. and decreasing the carbon impact of the Company by introducing the most innovative machinery for production of PVC granulates and PVC products. As a result, the Company achieved a raise of its production capacity with 80% and at the same time it lowered significantly the quantity of power used, as well as the production resources.

Our partner was the Norwegian organization Norsk Energi, which shared their over 30- year- experience and valuable know- how in the field of the effective and ecological energy utilization. As a result, all technological and production processes within the company were improved and turned into more stable and environment saving ones. The project was realized within the period of September 2015- April 2016.

With the successful realization of the project we proved that the stable production processes and the policies regarding the corporate social responsibility have their place in every single company, regardless the company's activity or size. Being a good corporate citizen, we - the team of Plast Commerce - 93, keep working for decreasing all negative impacts, caused by our production activity, because we believe that sustainable development and environmental protection are of first priority importance for the successful development of every business.

Thank You for trusting us!

The Team of Plast Commerce - 93 Ltd.





Head office

Address: bl.54 Mladost 1,
Sofia 1784, Bulgaria
Phone: +359 2 973 42 65; +359 2 974 47 87
e-mail: office@plastcommerce.net
Web: plastcommerce.net

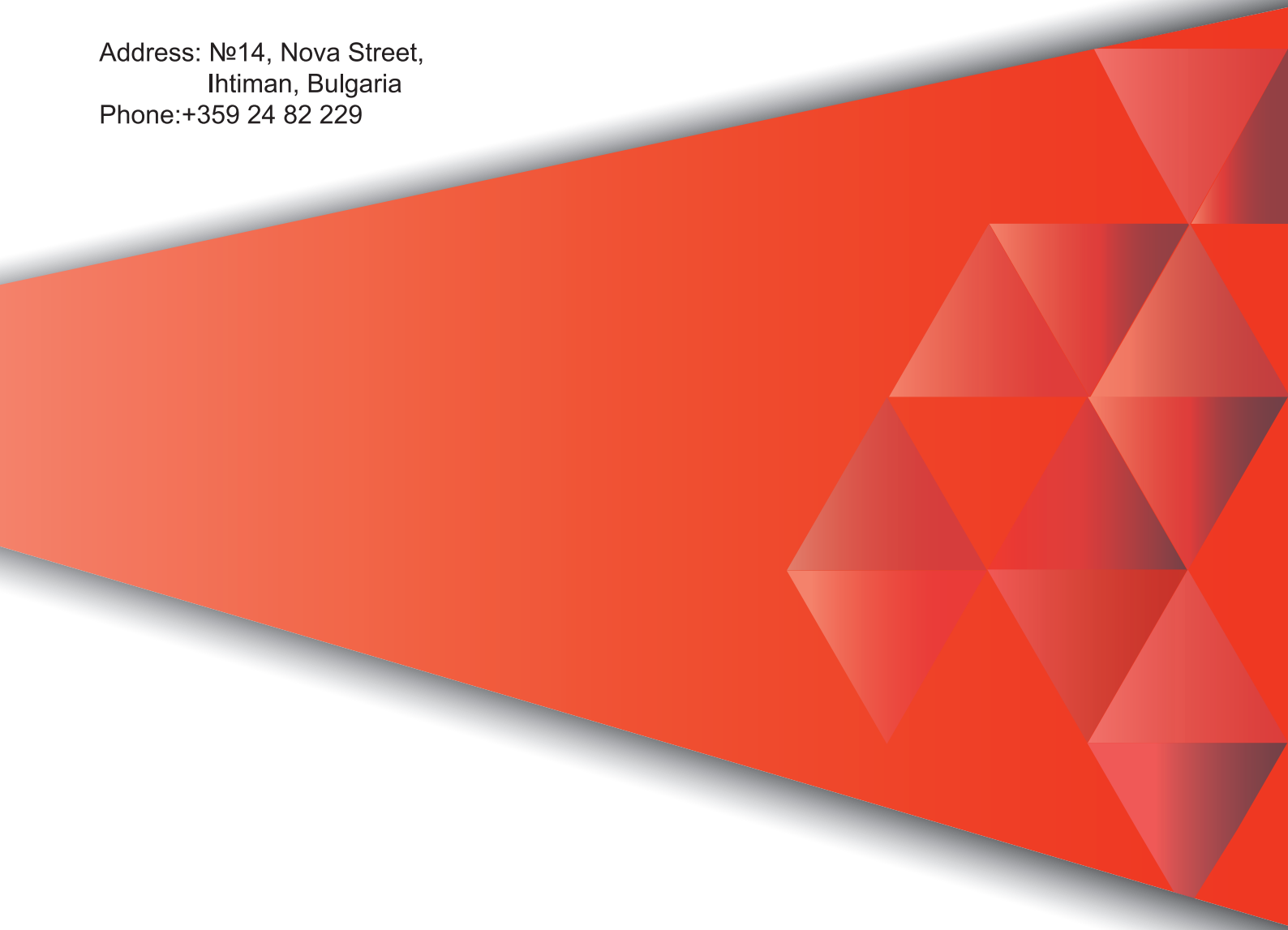
Warehouses

Address: №8, Kanarche Street,
Sofia, Bulgaria
Phone: +359 888 597 580

Address: №14, Nova Street,
Ihtiman, Bulgaria
Phone: +359 24 82 229

Factory

Address: North Industrial Zone,
Berkovitsa, Bulgaria
Phone: +359953 88307



The document is developed under project "Improvement of production processes in Plast Commerce - 93 for more sustainable behaviour" with the financial assistance of the Norwegian Government through the Norwegian Financial Mechanism 2009- 2014 within the frame of Programme Area BG10 - "Green Industry Innovations".

